

# KARCOR LLC

WESTGATE CENTER  
2428 Alameda Avenue Suite 110  
Norfolk, Virginia 23513-2446  
Business: (757) 853-1920  
Fax: (757) 857-3756

## TYPE OF SPACE:

Office: YES

Warehouse: YES

Zoning: I 1

Building: PHASE IV

Location: 4992 EUCLID RD SUITES 1 & 10

VIRGINIA BEACH VA 23462

Retail: \_\_\_\_\_ sq ft.

Office: 1320 sq ft.

Warehouse: 325 sq ft.

Outside storage:  Yes  No

Parking:  Yes  No

Ceiling height:

Office: 9'

Warehouse: 8'

Sky Lights:  Yes  No

Number: \_\_\_\_\_

Floors:

Grade Level:  Yes  No

Dock Level:  Yes  No

Loading Ramp:  Yes  No

Overhead Door: N/A

Electricity:

Phase: 1

Amp: 100

Volts: \_\_\_\_\_

H.V. A.C.

Office: HEAT & A/C

Warehouse: \_\_\_\_\_

Plumbing:

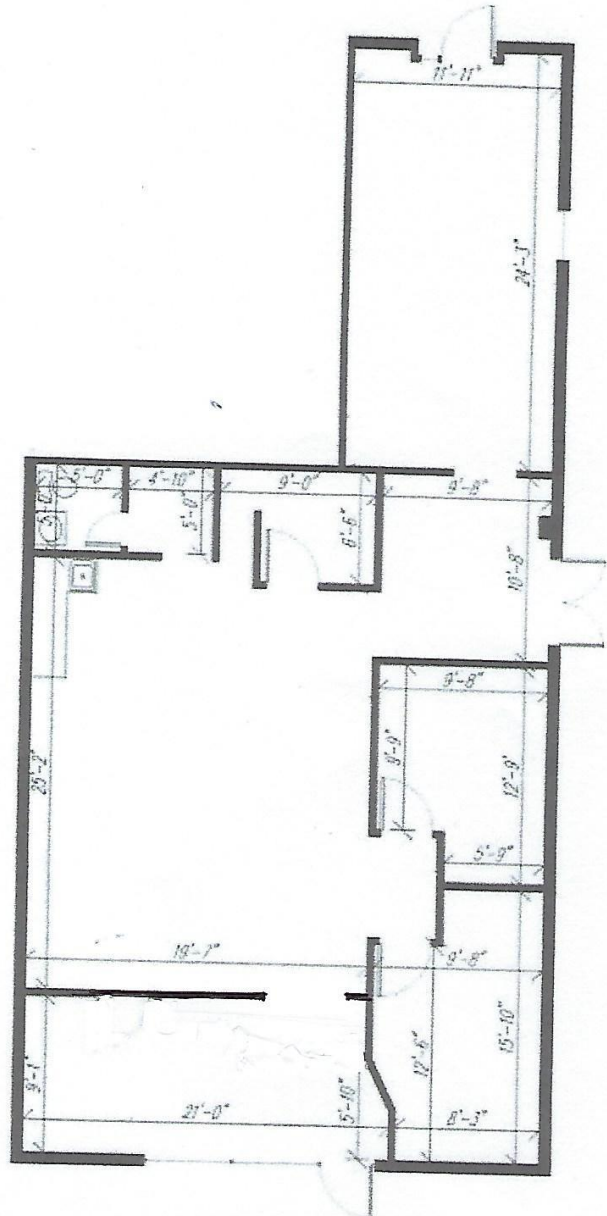
Number of Toilets: ONE

Slop Sink  Yes  No

Floor Drains  Yes  No

Hot Water:  Yes  No

PHASE IV 4992-10



PHASE IV 4992-1